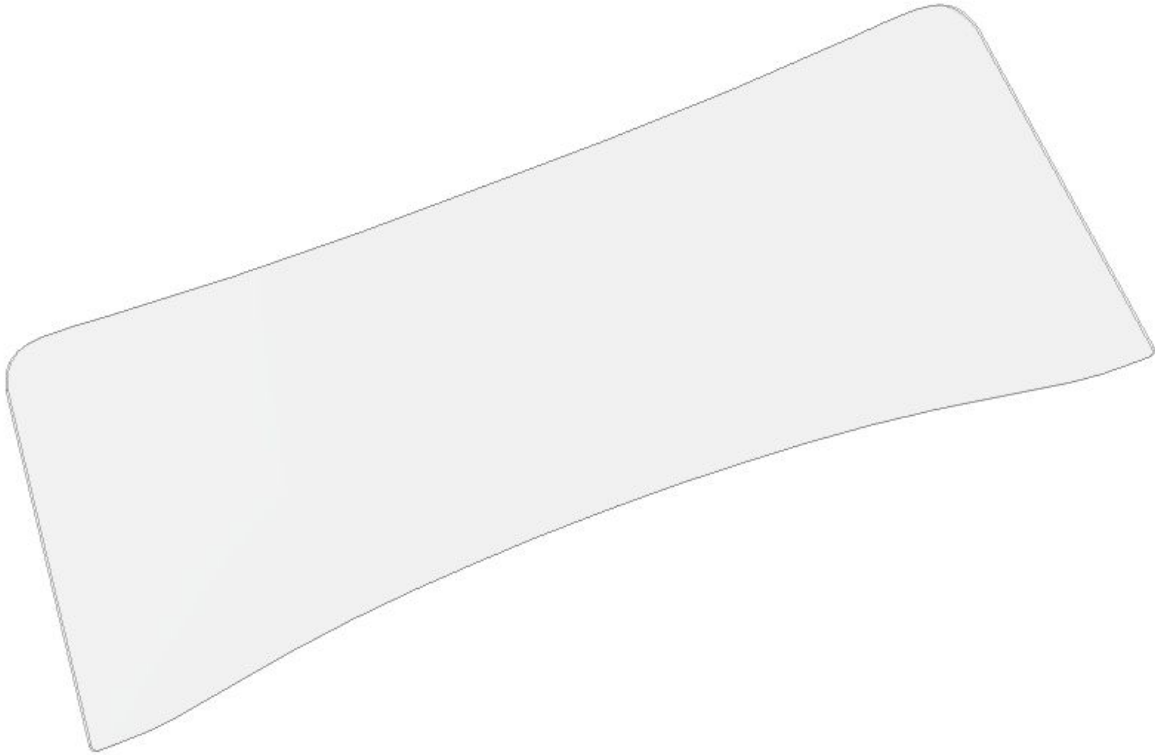


Fast Freddie's Fabrications



Installation Instructions for Part #: FWS01 Fast Freddie's Lexan Roadster Windshield

This windshield provides the solution for eliminating annoying windshield cracks and breakage that seem so prevalent on Cobra Roadster replicas:

- CNC machined out of only the highest quality Lexan MR-10 material
- Crystal clear with UV and abrasion resistant protection
- Offers a 13lb weight reduction over the stock glass
- Made in the USA

Fast Freddie's Fabrications
www.fastfreddiesfabrications.com
sales@fastfreddiesfabrications.com

Parts Included With Lexan Roadster Windshield Kit

DESCRIPTION	QTY
LEXAN MR-10 ROADSTER WINDSHIELD	1
FAST FREDDIE SPEC RUBBER GASKET	12 FT
INDUSTRIAL-GRADE SINGLE-EDGE RAZOR BLADE	1
4" PLASTIC SQUEEGEE	1
FLAT HEAD PHILLIPS MACHINE SCREWS	4

Tools Required

Tape Measure
Diagonal Pliers
Phillips Screwdriver

Optional Aids

$\frac{3}{4}$ " Socket & Driver
Wood Block (i.e. ~6" 2x4)
Plastic Dead Blow Hammer
Dishwashing Detergent
Extra Set of Hands

Note: Read all instructions before attempting installation. If you do not believe you are qualified in performing the necessary installation and modifications, please find an experienced professional who can. Fast Freddie's Fabrications will not be held responsible for improper modifications to your windshield frame or chassis.

1. GLASS WINDSHIELD REMOVAL

1. Remove the windshield assembly from the vehicle by loosening the side post screws from the windshield frame (4 per side). Set screws aside and place windshield frame on a workbench. Note: It is not necessary to remove the side posts from the chassis. If your side post are pre-loading the windshield frame and making it difficult to remove, you may crack loose the bolts holding the side posts to the frame with a $\frac{3}{4}$ " socket.



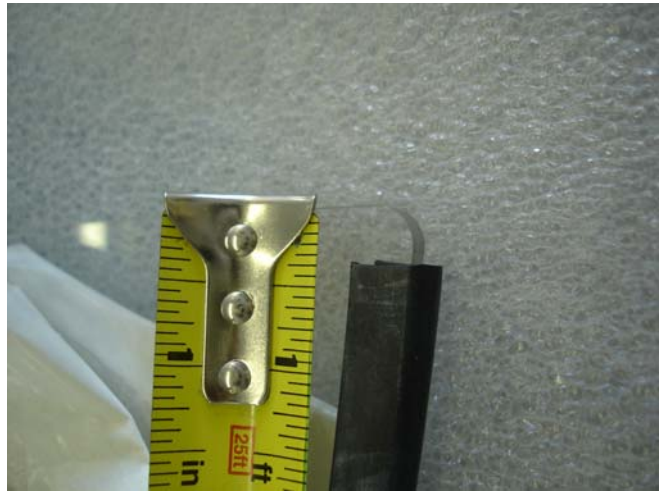
2. Loosen the small flat head Phillips machine screws (2 per side) on the lower sides of the windshield frame. Once removed, you may begin to separate the base from the upper loop of the windshield frame. Depending on conditions, the frame may be tight on the glass due to accumulated road grime, dirt, etc. If necessary, use a block of wood and a plastic dead blow hammer to whack sharply onto the base, starting at one end and working your way across until the base is removed. Do not remove the brass angles from the frame base.



3. Now remove the upper loop of the windshield frame from the glass; spread the sides first, then remove from the top. Use the block of wood and hammer if necessary. After the glass is removed, thoroughly clean the channel of the windshield frame with mineral spirits or paint thinner.

2. RUBBER GASKET INSTALLATION

1. Fold the protective paper from the edges of the lexan windshield and attach the rubber gasket starting on one side of the shield and working your towards the top. Use a tape measure to start the gasket $3/8$ " from the bottom of the shield.



2. Make an incision into the gasket at a distance no less than $1-1/4$ " from the end of the extrusion (i.e. $1-5/8$ " from the bottom of the shield). Now slice the bottom of the gasket off, up to the incision mark as shown below. These cuts allow clearance for the brass angles within the channel of the frame.



2. RUBBER GASKET INSTALLATION (continued...)

3. Affix the gasket around the top of the lexan windshield and down the other side.



4. Cut the material, as was done on the other side, at a distance 3/8" from the bottom of the shield. Set the remaining length of extrusion aside for the bottom of the shield in the upcoming steps.



5. Again, incise the extrusion no less than 1-1/4" from the end of itself and slice the bottom layer off.



2. RUBBER GASKET INSTALLATION (continued...)

6. Attach the remaining length of gasket material onto the bottom of the shield. Make the length of the gasket to match the length of the bottom of the shield. Now make an incision into the gasket at a distance no less than 1-3/8" from the end of the extrusion/shield. Then slice the bottom of the gasket off, up to the incision mark.



End result shown below (perform above steps to other side of extrusion):



3. LEXAN WINDSHIELD INSTALLATION

1. Lubricate the gasket material that is to mate with the upper loop of the windshield frame with diluted dishwashing detergent. Additionally lubricate the channel of the frame. Mate the upper loop of the windshield frame with the top of the lexan windshield. The gasket is designed to fit snugly, so it may take a little muscle to get the shield into the frame completely. This may be a good time to grab an extra set of hands to help with installation.



2. When the shield is inserted completely into the frame, the majority of the gasket material should no longer be visible. If some gasketing is exposed, use the provided plastic squeegee to squish the gasket within the frame.



4. LEXAN WINDSHIELD INSTALLATION (continued...)

3. Now lubricate the base channel as well as the gasket on the bottom of the windshield and assemble the base of the windshield frame to the shield. Grab a buddy if needed.



4. When the base of the frame is inserted completely, start the small flat head Phillips machine screws to secure the 2 piece frame together. Tighten once all screws have been started. Do not over-torque as the brass angles are easy to strip. If at this point you still see some gasket material that you can't seem to be able to hide behind the frame, then take the supplied razor blade and trim away any exposed rubber for a clean looking fitment.



5. Install the windshield assembly back into the vehicle by lining up the side post screws with the windshield frame (4 per side). Do not tighten any of these screws until all screws have been started. If necessary crack loose the bolts holding the side posts to the frame with a $\frac{3}{4}$ " socket. Once all 8 screws have been started, you may begin to torque the assembly together. Install your visors and mirrors to complete the assembly. With the lexan now in place, there is no longer a need to worry about shaving down any of the screws in fear of cracking a new windshield. Crank away, as you will NOT be able to crack your new lexan windshield.

CONGRATULATIONS! YOUR LEXAN WINDSHIELD INSTALLATION IS NOW COMPLETE!!!



Legal Disclaimer:

Parts sold or manufactured by Fast Freddie's Fabrications may not meet legal requirements for use on public roads. It is the user's responsibility to know and comply with all local and federal laws and regulations. Use or installation of Fast Freddie's Fabrications products may affect user insurance and/or vehicle warranty coverage. It is the user's sole responsibility for consequences that may occur due to having the product installed in his/her vehicle.

Fast Freddie's Fabrications assumes no legal responsibilities and/or liabilities, whether to user's vehicle, engine, person(s), and/or property(s), that result from the use of, or servicing of a vehicle of which a Fast Freddie's Fabrications product has been installed/attempted to be installed, or to any other vehicle(s) and/or person(s), regardless of whether or not this product has any involvement directly or indirectly and/or liability, and/or whether or not proper installation has been carried forth.

Acquisition of a Fast Freddie's Fabrications product will act as an acknowledgement of the legal disclaimer stated herein.